

# Fiber Cleaver Blade FCP-20BL

The FCP-20BL is specifically designed for SUMITOMO Fiber Cleaver and feature high precision with long life in excellent in quality and performance.

| Specifications           |  |
|--------------------------|--|
| Part No.                 | FCP-20BL   |
| Dimensions               | Diameter=20mm, Thickness=3mm   |
| Material                 | Cemented carbide   |
| Applicable fiber cleaver | FC-6S, FC-6S-C, FC-6M, FC-6M-C<br>FC-7S, FC-7M-M8, FC-7M-F8<br>SFC-S, SFC-SC |
| Number of positions      | 24   |
| Blade life*              | 54,000 fibers (2,250 fibers x 24 positions)                                  |

\*: Blade life is under condition that blade replacement / setting should be properly executed with SUMITOMO specific procedure. The number can vary and is not guaranteed.



Only use the SUMITOMO genuine blade.

Non SUMITOMO genuine blade can cause poor cleaving quality and performance.



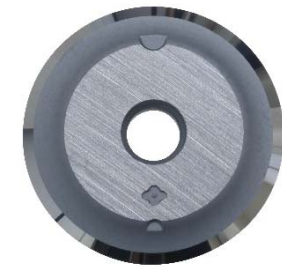
Hologram label



SUMITOMO logo



Top side



Bottom side